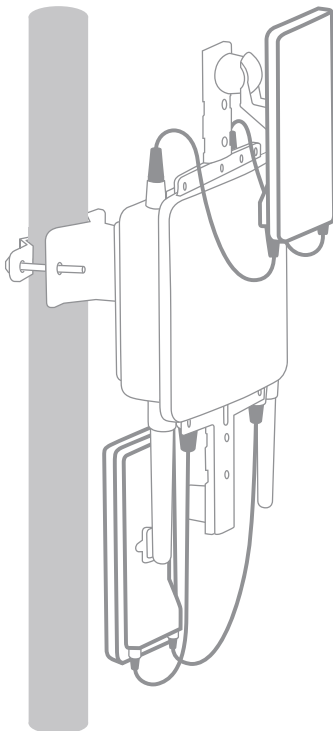


Meraki 11dBi 2.4GHz Sector Antenna (ANT-13)

Hardware setup guide



3. Attach the antenna to your Meraki access point and adjust the antenna direction to maximize its signal.



Multi-antenna configuration shown for reference.

1. Match colored stripe on antenna cable connector to colored marking next to access point connector (2.4GHz = green). Make sure to connect both cables to the same radio.
2. Connect the antenna cables to the appropriate N-type connectors on your access point securely but without overtightening.
3. Lower the cable boot over the antenna connection to ensure a water-tight seal.
4. Use the LEDs to help aim the antenna if you're connecting to an existing mesh network.

The beam width of the antenna is 30° vertical and 70° horizontal.

