

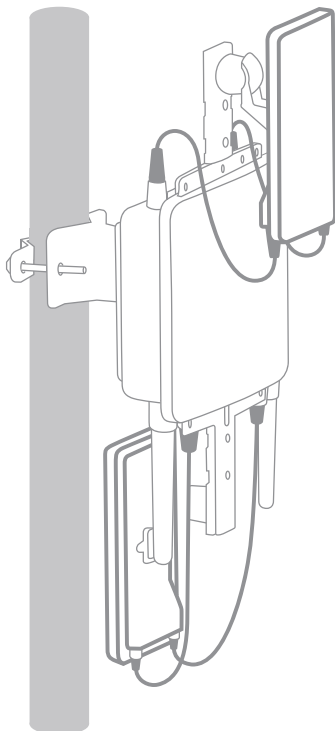
# Meraki 14dBi 5GHz Sector Antenna (ANT-11)

## Hardware setup guide



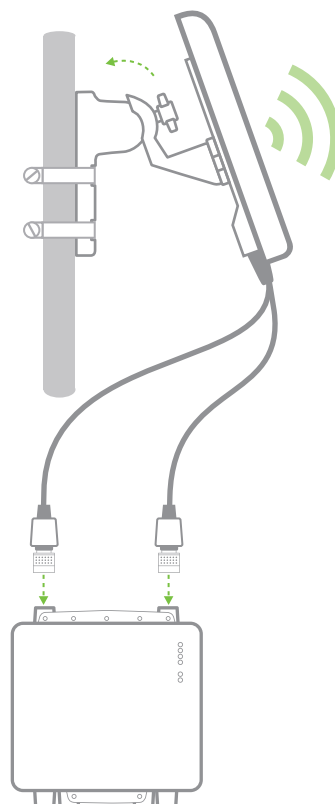
6

### 3. Attach the antenna to your Meraki access point and adjust the antenna direction to maximize its signal.



Multi-antenna configuration shown for reference.

5



The beam width of the antenna is 15° vertical and 70° horizontal.

1. Match colored stripe on antenna cable connector to colored marking next to access point connector (5GHz = blue). Make sure to connect both cables to the same radio.

2. Connect the antenna cables to the appropriate N-type connectors on your access point securely but without overtightening.

3. Lower the cable boot over the antenna connection to ensure a water-tight seal.

4. Use the LEDs to help aim the antenna if you're connecting to an existing mesh network.

